



**CONCLUDING MEETING OF THE INTERNATIONAL COMMISSION  
ON HOLOCAUST ERA INSURANCE CLAIMS  
Washington, DC - March 20, 2007**





## Offers and Awards to ICHEIC Claimants: Final Statistics

**ICHEIC received more than 90,000 claims eligible for processing.  
More than 48,000 of these claims received an offer or award  
through the ICHEIC process.**



## Offers and Awards to ICHEIC Claimants: Final Statistics

A total of \$306.24 million was offered or awarded to more than 48,000 claimants as a result of the ICHEIC process. This figure includes the following:

Companies and partner entities made 13,400 offers totaling \$223.08 million to ICHEIC claimants. Companies made an additional 786 offers amounting to \$15.19 million on claims submitted directly to them.

+

ICHEIC made 31,284 awards totaling \$31.28 million to claimants through its 8A1 humanitarian claims process. ICHEIC made an additional 2,874 awards totaling \$30.54 million through its Eastern European humanitarian claims process for named claims on nationalized/liquidated/no present-day successor companies.

+

A total of \$6.15 million was awarded through ICHEIC's appeals processes.



## Offers and Awards to ICHEIC Claimants: Final Statistics

**\$160.83 million of this total results from  
ICHEIC's "value added" matching and humanitarian claims operations:**

**Offers on matched claims total \$99.01 million.**

+

**8A1 humanitarian claims process awards total \$31.28 million.**

+

**8A2 humanitarian claims process awards total \$30.54 million.**



**Main Claims Process**

**Humanitarian Claims Process**

**Appeals Process**

**Audit Process**

**Organizational Closure**

**Final Budget Report**



## Main Claims Process: Final Statistics

### Named Claims

- ICHEIC member companies (including those companies operating under the GDV/German Foundation Agreement) received 14,351 named claims for processing.
- Member companies made 5,448 offers on named claims, totaling \$121.1 million.

### Matched Claims

- Member companies were able to match an additional 16,243 unnamed claims against their records.
- Member companies made 7,747 offers on matched claims, totaling \$98.4 million.



## Main Claims Process: German Insurance Market Statistics

### Named Claims

- German companies received 7,319 named claims for processing.
- German companies made 2,279 offers on named claims, totaling \$32.07 million.

### Matched Claims

- German companies were able to match an additional 12,434 unnamed claims against their records.
- German companies made 3,312 offers on matched claims, totaling \$33.46 million.

### GDV Offers

- The German Insurance Association (GDV) issued an additional 2,675 offers, totaling \$25.7 million, for blocked account and related cases.



## Main Claims Process: Generali Statistics

### Named Claims

- Generali received 6,626 named claims for processing.
- Generali made 2,665 offers on named claims, totaling \$80.3 million.

### Matched Claims

- Generali was able to match an additional 3,512 unnamed claims against its records.
- Generali made 1,903 offers on matched claims, totaling \$39.9 million.



## Main Claims Process: AXA, Winterthur, and Zurich Statistics

### Named Claims

- AXA, Winterthur, and Zurich received 406 named claims for processing.
- AXA, Winterthur, and Zurich made 178 offers on named claims, totaling \$5.7 million.

### Matched Claims

- AXA, Winterthur, and Zurich were able to match an additional 297 unnamed claims against their records.
- AXA, Winterthur, and Zurich made 183 offers on matched claims, totaling \$2.3 million.

These statistics relate to non-German operations. Please note that offer statistics for AXA, Winterthur, and Zurich German operations are covered in the German market statistics.



## Main Claims Process: Achievements

- Over 70 ICHEIC companies and partner entities have investigated more than 90,000 potentially eligible claims.
- Final decisions have been distributed on all ICHEIC claims.
- The ICHEIC London claims office closed on schedule 2006, having:
  - Verified all company decisions issued to ICHEIC claimants (over 30,000 decisions on named and matched claims);
  - Reconciled ICHEIC claims database with company records to ensure that companies received and processed all claims and results were properly recorded; and
  - Reconciled research database match information to ensure that all matches were reviewed by companies and decisions on those matches distributed.



**Main Claims Process**

**Humanitarian Claims Process**

**Appeals Process**

**Audit Process**

**Organizational Closure**

**Final Budget Report**



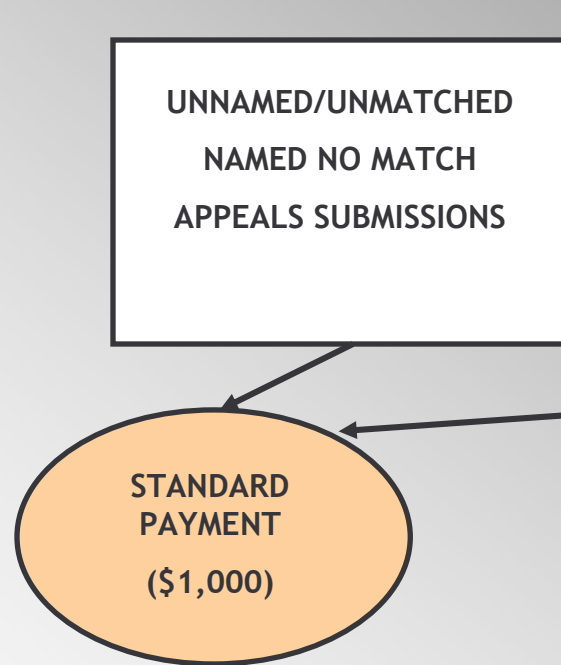
## Humanitarian Claims Processes: Final Statistics

More than 34,000 claimants received awards totaling \$61.82 million through ICHEIC's humanitarian claims processes.

- 31,284 awards were made through the 8A1 humanitarian claims process, for a total of \$31.28 million.
- 2,874 awards were made through the 8A2 Eastern European humanitarian claims process, for a total of \$30.54 million.

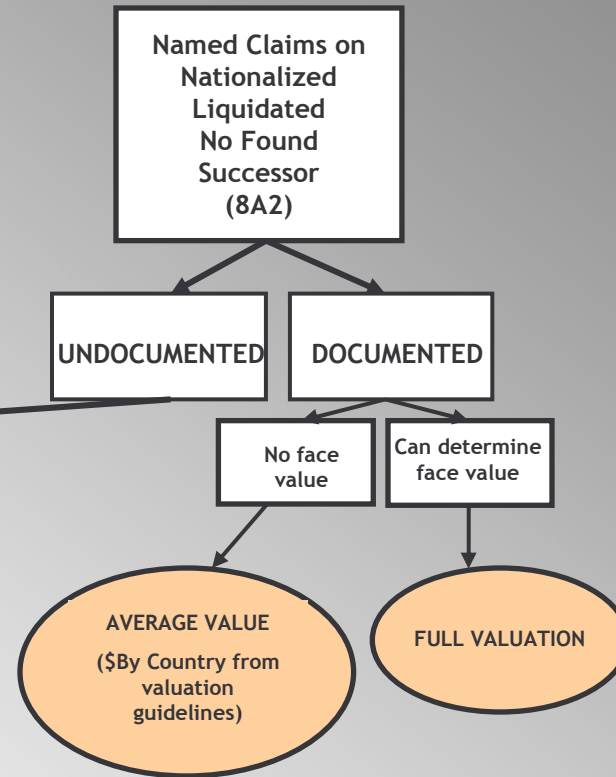


## 8A1 Claims Process



Awards in the 8A process are made on a PER CLAIMANT basis.

## Eastern European Claims Process



**Note:** Only payments on named Eastern European claims with documentation were made on a per policy basis. All other payments through the humanitarian claims process were made on a per claimant basis.



**Main Claims Process**

**Humanitarian Claims Process**

**Appeals Process**

**Audit Process**

**Organizational Closure**

**Final Budget Report**



## Appeals Process: Final Statistics

	Appeals Panel (German/GDV)	Appeals Tribunal (All other ICHEIC companies)
Appeals Received	955	1257
Awards Made	104	281
Value of Awards	\$1,255,011	\$4,903,389
Appeals Dismissed	771	880
Appeals Withdrawn/Offer Accepted	80	96
Appeals Outstanding	0	0



## Appeals Process: Achievements

- All Appeals Tribunal and Appeals Panel cases have been decided, and all decisions have been sent to claimants.
- The ICHEIC London Appeals Office closed on schedule in December 2006, following reorganization put into effect in September 2006.
- In the last four months of 2006, the Appeals Office finalized a total of 481 appeals. This compares to a total of 81 appeals finalized in the last four months of 2005.



**Main Claims Process**

**Humanitarian Claims Process**

**Appeals Process**

**Audit Process**

**Organizational Closure**

**Final Budget Report**



## Audit Process Report

- All Stage 1 audits have been completed. Stage 1 audits examine the companies' systems and procedures that are set up to achieve compliance with ICHEIC Audit Standards.
- All Stage 2 audits have been completed. Stage 2 audits examine each company's handling of claims.
- All Stage 1 and Stage 2 audit reports have been posted on the ICHEIC website document center.



**Main Claims Process**

**Humanitarian Claims Process**

**Appeals Process**

**Audit Process**

**Organizational Closure**

**Final Budget Report**



## Closing Our Doors

- The ICHEIC Washington office will close on March 30, 2007.
- Closeout of ICHEIC payment operations:
  - Transfer of all payment responsibilities on German claims to the GDV
  - Audit of Generali payment operations related to ICHEIC claims
  - Closeout of remaining humanitarian claims payment operations



## Archiving ICHEIC Documents

ICHEIC has made arrangements for the archiving of several categories of information:

- **ICHEIC Website ([www.icheic.org](http://www.icheic.org))**: The website will be maintained by the US Holocaust Memorial Museum. This preserves access to ICHEIC's public documents, including agreements, valuation guidelines, and statistical information about the claims process. The list of potential Holocaust Era insurance policyholders is available on Yad Vashem's website at <http://www.yadvashem.org/pheip/>.

- **Chairman's decision memoranda and ICHEIC meeting minutes**: These key documents will be maintained by the US Holocaust Memorial Museum.

- **ICHEIC Research Database**: The research database will be maintained by the US Holocaust Memorial Museum.

- **Claims and Appeals Files**: These files will be stored by the US Holocaust Memorial Museum (accessible for research only after a 70 year period, consistent with past practice of museum and legal advice).

- **Administrative and financial documents**: These documents will be maintained at a private facility for a period of five years.



**Main Claims Process**

**Humanitarian Claims Process**

**Appeals Process**

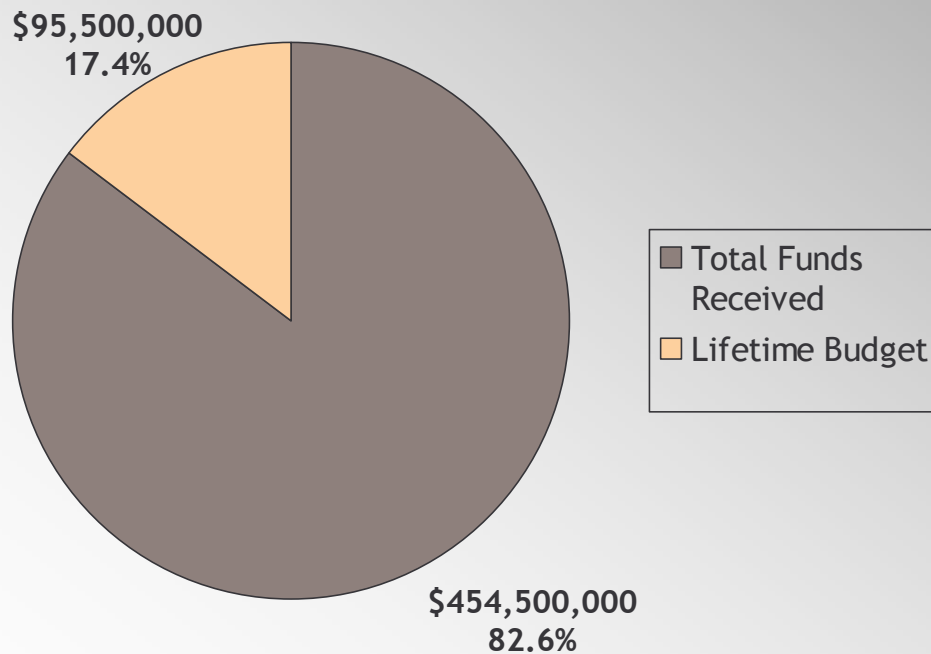
**Audit Process**

**Organizational Closure**

**Final Budget Report**



## Lifetime Budget



- Total funds received by ICHEIC, including funds received from participating insurance companies and the German government, the Bermuda Trust, realized exchange gains, and interest earned amount to \$550 million.
- The total lifetime budget amounts to \$95.5 million, or 17.4% of the total funds received.
- This budget covers the processing of approximately 90,000 individual claims eligible for consideration under the ICHEIC process.



**CONCLUDING MEETING OF THE INTERNATIONAL COMMISSION  
ON HOLOCAUST ERA INSURANCE CLAIMS  
Washington, DC - March 20, 2007**

